

XDS100v3 Quick Start Guide



Extension Cable w/adaptor



XDS100v3



USB Cable



Quick Start Guide

1.0 SYSTEM REQUIREMENTS

To operate the Spectrum Digital XDS100v3 JTAG Emulator with your system it needs to meet the following requirements:

- 2 GB of free hard disk space
- Microsoft Windows™ XP/Vista/Win 7/Linux
- Min 1 GB RAM, 2 GB recommended
- Color Display
- Internet access
- USB port
- Code Composer Studio Rev v5 or later

2.0 WHAT'S INCLUDED

The Spectrum Digital XDS100v3 USB JTAG emulator kit includes:

- XDS100v3 USB JTAG Emulator
- Extension Cable
- CT120 to T114 pin adapter (attaches to extension cable)
- USB cable
- This Quick Start Guide

Note: This kit does **NOT** include Code Composer Studio or drivers. This software can be obtained from Texas Instruments (www.ti.com). See installation instructions below.

3.0 XDS100v3 USB DEVICE and CODE COMPOSER STUDIO INSTALLATION

Note: *Install ALL software prior to connecting the XDS100v3 to the computer !*

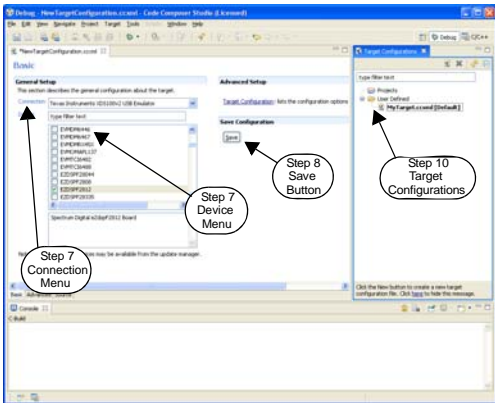
This setup guide assumes the user has already acquired and installed Code Composer Studio (CCS). If CCS has not been installed, then do so now. CCS is **not** included in the Spectrum Digital XDS100v3 USB JTAG Emulator kit. The Spectrum Digital XDS100v3 supports CCS 5.x, which can be downloaded from the TI web site.

The user must be logged onto Windows with "Administrative Rights" and any anti-virus software must be disabled during installations. Please contact your system administrator if help is needed in this area.

3.1 TARGET CONNECTION and CCS v5 CONFIGURATION INSTRUCTIONS

1. All XDS100v3 USB drivers and CCS v5 drivers are included with the CCS v5 software installation, or as an update.
2. Connect the included USB cable to a USB port on the host computer, then connect the USB cable to the XDS100v3. Windows will recognize the new hardware connection and complete the XDS100v3 installation automatically.
3. The target processor board should be unpowered at this time. Connect the XDS100v3 female 14-pin JTAG connector to the 14-pin male JTAG connector on the target board.
4. Launch Code Composer Studio v5 from the shortcut on the desktop. (This was created when CCS v5 was installed.)
5. The Code Composer Studio v5 window will appear. Click the "File" menu, then select "New-->Target Configuration File"
6. The "New Target Configuration" window will appear. Enter a file name that describes the emulator connection and/or Texas Instruments processor being used and then click "Finish".

7. The “Basic” configuration setup window will appear. Select “Texas Instruments XDS100v3 USB Emulator” from the “Connection” menu and select the target processor being used from the “Device” menu. (See the screen shot below.)



8. Click the “Save” button to save the configuration.
9. Apply power to the target processor board.
10. Click the “View” menu and select “Target Configurations” to expose the configuration(s) that have been built or imported. A new tab labeled “Target configurations” will become available in the CCS window.

11. Expand the “User Defined” folder. Right-click on the configuration that has been created and click “Launch Selected Configuration”.
12. CCS will now attempt to connect to the target processor through the XDS100v3.
13. Code Composer Studio may now be used to download code and debug code on the target board.

4.0 XDS100v3 Switch Settings

The XDS100v3 has a two position dip switch. These two positions allow you to configure the XDS100v3 in adapter mode for the XDS560v1, and enable the XDS100v3 UART port. The figure below shows SW1 in the default, “OFF”, “OFF” position.

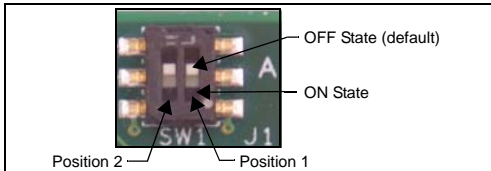


Table 1: Switch SW1

Position	State	Function
SW1-1	ON	Enable XDS100v3 in adapter mode for use with external XDS560v1
	OFF	Disable XDS100v3 adapter mode
SW1-2	ON	Enable XDS100v3 UART Port
	OFF	Disable XDS100v3 UART Port

5.0 SUPPORT RESOURCES

1. If you have problems or need additional information regarding the embedded emulation please refer to the XDS100 USB wiki on the TI web site. The URL for this site is:
<http://tiexpressdsp.com/index.php/xds100>
2. Code Composer Studio support is available via a forum at
<http://community.ti.com/forums/138.aspx>
3. More information about other Spectrum Digital emulators can be found at:
www.spectrumdigital.com

EVALUATION BOARD/EMULATOR/KIT IMPORTANT NOTICE

Spectrum Digital, Inc. (SDI) provides the enclosed product(s) under the following conditions:

This evaluation board/kits is intended for use for **ENGINEERING DEVELOPMENT, DEMONSTRATION, OR EVALUATION PURPOSES ONLY** and is not considered by SDI to be a finished end-product fit for general consumer use. Persons handling the product(s) must have electronics training and observe good engineering practice standards. As such, the goods being provided are not intended to be complete in terms of required design-, marketing-, and/or manufacturing-related protective considerations, including product safety and environmental measures typically found in end products that incorporate such semiconductor components or circuit boards. This evaluation board/kits does not fall within the scope of the European Union directives regarding electromagnetic compatibility, restricted substances (RoHS), recycling (WEEE), FCC, CE or UL, and therefore may not meet the technical requirements of these directives or other related directives.

Should this evaluation board/kits not meet the specifications indicated in the User's Guide, the board/kits may be returned within 30 days from the date of delivery for a full refund. **THE FOREGOING WARRANTY IS THE EXCLUSIVE WARRANTY MADE BY SELLER TO BUYER AND IS IN LIEU OF ALL OTHER WARRANTIES, EXPRESSED, IMPLIED, OR STATUTORY, INCLUDING ANY WARRANTY OF MERCHANTABILITY OR FITNESS FOR ANY PARTICULAR PURPOSE.**

The user assumes all responsibility and liability for proper and safe handling of the goods. Further, the user indemnifies SDI from all claims arising from the handling or use of the goods. Due to the open construction of the product, it is the user's responsibility to take any and all appropriate precautions with regard to electrostatic discharge.

EXCEPT TO THE EXTENT OF THE INDEMNITY SET FORTH ABOVE, NEITHER PARTY SHALL BE LIABLE TO THE OTHER FOR ANY INDIRECT, SPECIAL, INCIDENTAL, OR CONSEQUENTIAL DAMAGES.

SDI currently deals with a variety of customers for products, and therefore our arrangement with the user **is not exclusive.**

SPECTRUM DIGITAL, INC

12502 Exchange Dr., Ste 440, Stafford, TX. 77477

T: 281.494.4505 **F:** 281.494.5310

e-mail: sales@spectrumdigital.com **website:** www.spectrumdigital.com

© Copyright 2011 Spectrum Digital, Inc.

512996-4001A